

# Series 2211ACC : FR Flushing Ring All stainless steel

FR



### Features

- With double flushing ports.
- Suitable with flanged, pancake or inline diaphragm seals.
- Available in all exotic material grades.

### Applications

- The flushing ring is designed to be sandwiched between the process flange & the diaphragm seal.
- Material collected in front of diaphragm can be flushed out through the flushing ports.

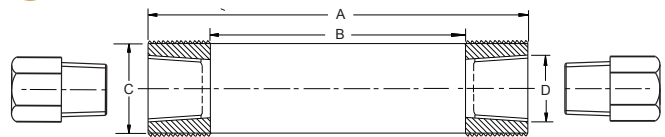
## Specifications

### Standard Version

(Compatible Strataa Diaphragm Seal Models : IS, FFT, DFIT, WT)

Flange Size	: ½" to 5" as per ANSI B 16.5
Material	: AISI 316 SS
Number of ports	: Two
Port Connection	: 1/4" NPT (F) with Male plug
Sealing Face	: Suitable to Raised Face of Flange

### Dimensional Details



For flange type diaphragm seals

Flange Size	Class	A	B	C	D
½"	150 # to 600 #	35	12	30	1/4" NPT or ½" NPT (F)
¾"	150 # to 600 #	43	20	30	
1"	150 # to 600 #	51	25	30	
1½"	150 # to 600 #	73	43	30	
2"	150 # to 600 #	92	62	30	
3"	150 # to 600 #	127	92	30	
4"	150 # to 600 #	157	92	30	
5"	150 # to 600 #	185.5	126	30	

Note: other sealing face and higher pressure rating flushing rings on request. Please specify

Notes :

- Drawings are not to scale.
- All Dimensions are in mm.

## How To Order - Ordering Example : 2211ACC : FR.2"400#RF.SS.4NPF

<b>Basic Model</b>		<b>2211ACC : FR</b>							
<b>Flange Size (As per ANSI B 16.5)</b> (* Consult factory for drawings of these Strataa Diaphragm Seal Models)									
1/2"	3/4"	1"	1½"	2"	3"	4"	5"	DCT*	IS*
<b>Flange Rating</b> (Do not select if Strataa Diaphragm Seal Model DCT required)									
150	300	400	600						
<b>Code</b>	<b>Sealing Face</b>	<b>Code</b>	<b>Sealing Face</b>						
RF	Raised Face (Standard)	FF	Flat Face						
<b>Code</b>	<b>Flushing Ring Material</b>	<b>Code</b>	<b>Flushing Ring Material</b>	<b>Code</b>	<b>Flushing Ring Material</b>				
SSL	AISI 316L SS	CS	Carbon steel	TTM	Titanium				
HTLC	Hastelloy C	MON	Monel	SS	AISI 316 SS (Standard)				
<b>Code</b>	<b>Flushing Ports</b> ( with two male plugs)	<b>Code</b>	<b>Flushing Ports</b> ( with two male plugs)						
4NPF	1/4" NPT (F) (Standard)	2NPF	½" NPT (F)						
<b>Code</b>	<b>Options</b>	<b>Code</b>	<b>Options</b>						
MTC	Material test certificates*	CN	Conformity as per NACE Standard						

\* Material test certificates will be provided for wetted parts only with chemical composition testing. For others, please consult factory.

Note: Design and Specifications subject to change without prior notice.