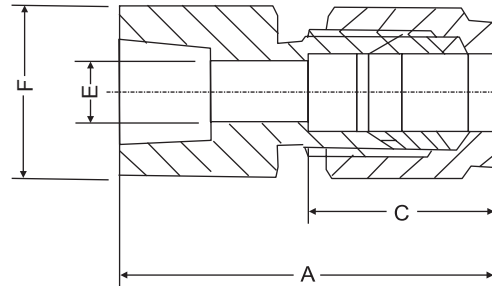




Dimensional Details:



Notes : Drawings are not to scale

Dimensional Details

Dimension, in.

| Tube OD | NPT Male Thread Size | Part Number | A | C | E | F |
|---------|----------------------|-------------|------|------|------|--------|
| 1/8 | 1/8 | S2CFS2N | 1.13 | 0.50 | 0.09 | 9/16 |
| 1/8 | 1/4 | S2CFS4N | 1.32 | 0.50 | 0.09 | 3/4 |
| 1/4 | 1/8 | S4CFS2N | 1.23 | 0.60 | 0.19 | 9/16 |
| 1/4 | 1/4 | S4CFS4N | 1.41 | 0.60 | 0.19 | 3/4 |
| 1/4 | 3/8 | S4CFS6N | 1.48 | 0.60 | 0.19 | 7/8 |
| 1/4 | 1/2 | S4CFS8N | 1.67 | 0.60 | 0.19 | 1 1/16 |
| 3/8 | 1/4 | S6CFS4N | 1.48 | 0.66 | 0.28 | 3/4 |
| 3/8 | 3/8 | S6CFS6N | 1.54 | 0.66 | 0.28 | 7/8 |
| 3/8 | 1/2 | S6CFS8N | 1.73 | 0.66 | 0.28 | 1 1/16 |
| 3/8 | 3/4 | S6CFS12N | 1.88 | 0.66 | 0.28 | 1 5/16 |
| 1/2 | 1/4 | S8CFS4N | 1.59 | 0.90 | 0.41 | 13/16 |
| 1/2 | 3/8 | S8CFS6N | 1.65 | 0.90 | 0.41 | 7/8 |
| 1/2 | 1/2 | S8CFS8N | 1.84 | 0.90 | 0.41 | 1 1/16 |
| 1/2 | 3/4 | S8CFS12N | 1.90 | 0.90 | 0.41 | 1 5/16 |
| 3/4 | 1/2 | S12CFS8N | 1.84 | 0.96 | 0.62 | 1 1/16 |
| 3/4 | 3/4 | S12CFS12N | 1.90 | 0.96 | 0.62 | 1 5/16 |
| 1 | 3/4 | S16CFS12N | 2.10 | 1.23 | 0.88 | 1 3/8 |
| 1 | 1 | S16CFS16N | 2.45 | 1.23 | 0.88 | 1 5/8 |

Dimension, mm.

| Tube OD | NPT Male Thread Size | Part Number | A | C | E | F |
|---------|----------------------|-------------|------|------|------|----|
| 6 | 1/4 | SM6CFS4N | 35.8 | 15.3 | 4.8 | 19 |
| 6 | 3/8 | SM6CFS6N | 37.6 | 15.3 | 4.8 | 22 |
| 6 | 1/2 | SM6CFS8N | 42.5 | 15.3 | 4.8 | 27 |
| 8 | 1/4 | SM8CFS4N | 37.0 | 16.2 | 6.4 | 19 |
| 8 | 3/8 | SM8CFS6N | 38.5 | 16.2 | 6.4 | 22 |
| 8 | 1/2 | SM8CFS8N | 43.3 | 16.2 | 6.4 | 27 |
| 10 | 1/4 | SM10CFS4N | 37.8 | 17.2 | 7.9 | 19 |
| 10 | 3/8 | SM10CFS6N | 39.4 | 17.2 | 7.9 | 22 |
| 10 | 1/2 | SM10CFS8N | 44.2 | 17.2 | 7.9 | 27 |
| 12 | 1/4 | SM12CFS4N | 40.3 | 22.8 | 9.5 | 22 |
| 12 | 3/8 | SM12CFS6N | 41.9 | 22.8 | 9.5 | 22 |
| 12 | 1/2 | SM12CFS8N | 46.7 | 22.8 | 9.5 | 27 |
| 16 | 1/2 | SM16CFS8N | 46.9 | 24.4 | 12.7 | 27 |
| 20 | 1/2 | SM20CFS8N | 47.9 | 26.0 | 15.9 | 30 |
| 20 | 3/4 | SM20CFS12N | 49.7 | 26.0 | 15.9 | 35 |
| 22 | 3/4 | SM22CFS12N | 49.7 | 26.0 | 18.3 | 35 |
| 22 | 1 | SM22CFS16N | 57.9 | 26.0 | 18.3 | 41 |
| 25 | 3/4 | SM25CFS12N | 53.4 | 31.3 | 21.8 | 35 |
| 25 | 1 | SM25CFS16N | 62.3 | 31.3 | 21.8 | 41 |

Dimensions and specifications shown are approximate, may vary from time to time.

- Note : 1. A and C dimensions are typical finger-tight
2. Other Threading available on request

| Code | Material | Code | Material | Code | Material | Code | Material |
|------|--------------|------|-----------|------|-------------|------|----------|
| CS | Carbon Steel | SS | SS 316 | SS3 | SS 304 | SSL | SS 316L |
| MON4 | Monel 400 | MON5 | Monel 500 | HTLC | Hastelloy C | | |