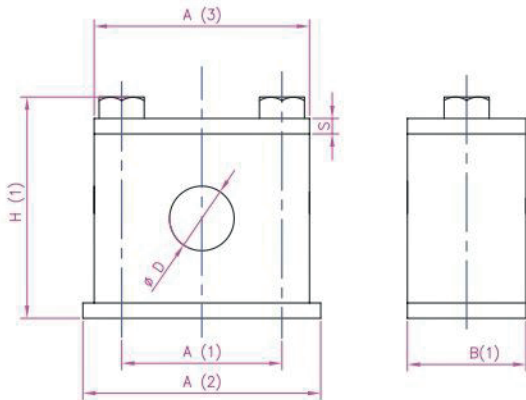




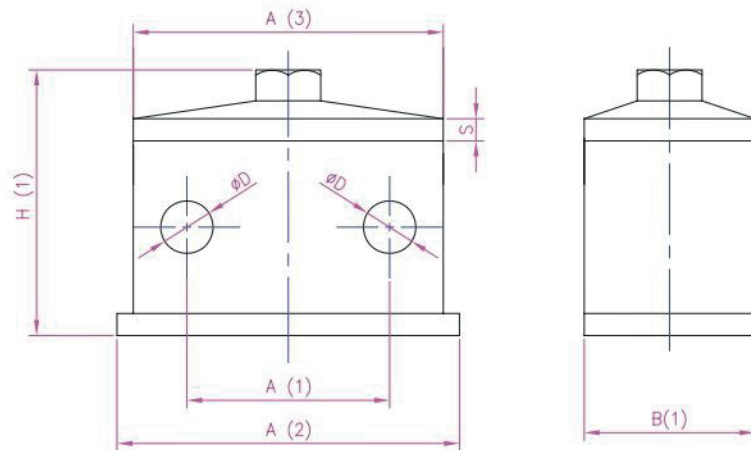
- Types**
- Single Hole
 - Double Hole

Dimensional Details - Single Hole



PIPE OD (D)	A (1)	A (2)	A (3)	H (1)	S	B(1)
1/2"	26	42.2	40.2	42.5	3	30

Dimensional Details - Double Hole




PIPE OD (D)	A (1)	A (2)	A (3)	H (1)	S	B(1)
1/2"	28.5	55.3	51	44	3	30

How To Order - Ordering Example: 6000IF: TC.SH.2OD

Basic Model		6000IF : TC	
Code	Type	Code	Type
SH	Single Hole	DH	Double Hole
Code		Connections	
2OD	1/2" OD		

Other Connections can be provided on request, please consult factory if required.

Note: Design and Specifications subject to change without prior notice.

TUBE CLAMPS		DESCRIPTION	
		PP	
		Polypropylene	
		Green / Black	
		Thermoplastic Copolymer	
SPECIFICATIONS			
TYPE	LIGHT SERIES	HEAVY SERIES	TWIN SERIES
Size	6.0 mm to 76.1 mm	6.0 mm to 219.0 mm	6.0 mm to 42.0 mm
Load (In the piping system)	W.P. up to 1500 PSI (100 Bar)	W. P. up to 6000 PSI (400 Bar)	W.P. up to 1500 PSI (100 Bar)
Finish	Zinc plated Top/Bottom Plate	Zinc plated Top/Bottom Plate	Zinc plated Top/Bottom Plate
PROPERTIES			
MECHANICAL			
Tensile Strength		36 Mpa (at yield, 50 mm/min.) (ASTM D638)	
Tensile Elongation		%10 (at yield, 50 mm/min.) (ASTM D638)	
THERMAL			
Temperature Range (Brief Exposure)		-20° F to + 215° F ; (-30° C to + 102° F)	
Temperature Range (Brief Exposure)		-22° F to + 194° F ; (-30° C to + 90° F)	
ELECTRICAL			
Dielectric Strength (0.0800 in.)		475 V/mil (ASTM D 149)	
Dielectric Constant		2.26 – 2.36 (ASTM D 150)	
Volume Resistivity		>2 X 10 ¹⁶ OHM-CM (ASTM D 257)	
STANDARDS			
DIN 3015 – PART – 1, 3.			
Meets Multiple Automotive Industry Specifications			