

# Series 2211ACC : CT

## Cooling Tower

### All stainless steel



#### Features

- Stainless steel construction
- Suitable for clean air
- Gases & non crystallized liquids

#### Applications

- Cooling towers are used mainly to protect pressure Instruments, gauges, switches and transmitters directly coming in contact with high temperature process fluids or vapours filled with condensation fluids.
- These are mounted between process and pressure instrument.
- They reduce process pulsation, act as heat dispenser and generate cooling effect to save instrument from working at dangerous temperature.

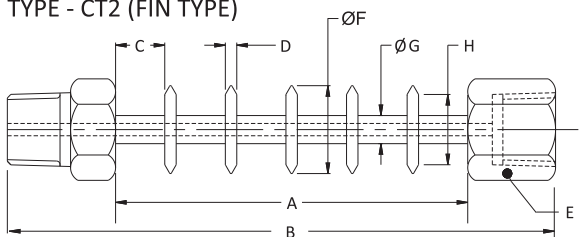
## Specifications

### Standard Version

Process Connection : 1/4" BSP(M)  
Instrument Connection : 1/4" BSP(F)  
Material of Connection : AISI 316 SS

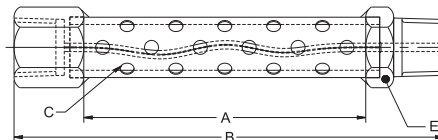
### Dimensional Details

#### TYPE - CT2 (FIN TYPE)



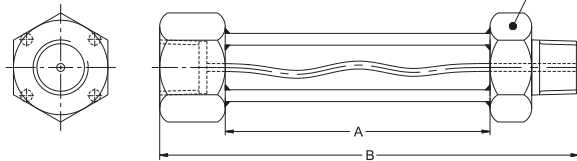
A	B	C	D	ØF	ØG	H	E
100	150 ± 5	14	3.25	25	10	20	A/F 25.0

#### TYPE - CT1 (PERFORATED TYPE)



A	B	E	C
100	150	A/F 25.0	Ø5.0

#### TYPE - CT3 (CAPILLARY TYPE)



A	B	E
100	150 ± 5	A/F 25.0

- Notes :
- Drawings are not to scale.
  - All Dimensions are in mm.
  - NS = Nominal Size.

## How To Order - Ordering Example : 2211ACC : CT.CT1.SS.150mm.4BSM.4BSF

Basic Model 2211ACC : CT					
Code	Type	Code	Type	Code	Type
CT1	Perforated	CT2	FIN type	CT3	Capillary
Code	Body Material	Code	Body Material		
SS	AISI 316 SS (Standard)	SSL	AISI 316L SS		
Total length (Including Thread)					
150 mm		300 mm			
Code	Connections	Code	Connections	Code	Connections
4BSM.4BSF	1/4" BSP (M x F) (Standard)	38BSM.38BSF	3/8" BSP (M x F)	2BSM.2BSF	1/2" BSP (M x F)
4NPM.4NPF	1/4" NPT (M x F)	38NPM.38NPF	3/8" NPT (M x F)	2NPM.2NPF	1/2" NPT (M x F)

Note : Connections like Metric/ PT/ PF/ Flaired/ UNF/ G/ R etc can be provided on request.