

Series 2511TG : BMT INDUSTRIAL THERMOMETER BIMETAL

BMT



Features

- Stainless steel case & stem
- Stem length available from 50 mm
- Bottom / back / every angle entry
- Silicon oil filled (optional)
- With or without thermowell
- External zero adjustment (optional)
- Standard followed EN 13190

Applications

- Chemicals
- Refinery
- Fertilizer
- Petrochemicals
- Pharmaceutical
- Power
- Cement
- Sugar
- Food
- Beverages
- Pulp
- Paper
- Allied process industries which are having corrosive media / environment

Specifications

Standard Version: 50 mm = Range up to 150°C Max, 63 mm = Range up to 300°C Max.
80mm, 100mm, 125mm & 150mm = Range up to 500°C Max.
(For compound ranges, refer range table)

Accuracy	: Class 1 as per EN 13190
Case, Bezel & Clamp	: AISI 304 SS
Stem & Connection	: AISI 316 SS
Joints	: TIG argon arc welding
Sensing Element	: Bi - metal strip coiled
Ambient Temperature	: -25°C to +65°C
Operating pressure	: 15 kg/cm ² (without thermowell)
Over range limit	: 110 % of full scale
Stem Diameter	: 8 mm
Process connection	: ½" BSP (M) fixed
Protection	: IP 65
Dial	: Aluminum, black graduation on white background
Pointer	: Aluminum, black coloured, Slotted zero adjustable & Fixed for NS 50 mm & 63 mm
Zero adjustment	: Externally for mounting code EA & BMEL (Except NS 50 mm & 63 mm)
Window	: Sheet Glass
Gasket	: Neoprene

Nominal range, measuring ranges & limits of error as per EN 13190

Nominal Range (°C)	Measuring Range (°C)	Limits of Error (± °C)
-20 to +40	-10 to +30	1
-20 to +60	-10 to +50	1
-20 to +120	-10 to +110	2
-30 to +30	-20 to +20	1
-30 to +50	-20 to +40	1
-30 to +70	-20 to +60	1
-40 to +40	-30 to +30	1
-40 to +60	-30 to +50	1
-100 to +60	-80 to +40	2
0 to 60	10 to 50	1
0 to 80	10 to 70	1
0 to 100	10 to 90	1
0 to 120	10 to 110	2
0 to 160	20 to 140	2
0 to 200	20 to 180	2
0 to 250	30 to 220	2.5
0 to 300	30 to 270	5
0 to 400	50 to 350	5
0 to 500	50 to 450	5
0 to 600	100 to 500	10

Silicon oil filled Version

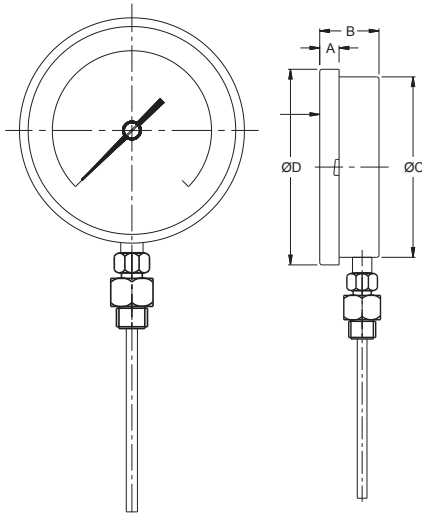
Accuracy	: Class 1 as per EN 13190
Ambient Temperature	: Maximum 65°C
Window	: Plexi Glass
Dampening Liquids	: Silicon Oil (Option DS & QZ)
Gasket & filling Plug*	: Viton
Other Features	: Refer Specification of Standard Version

*Gasket & Filling plug of Viton.

Note: Design and Specifications subject to change without prior notice.

Dimensions - Standard Version

Diagram and Code indicates Type of Mounting

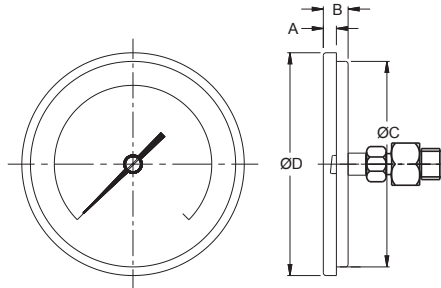


CODE - BM

NS	A	B	ØC	ØD	Approx. Wt.#
63	12.5	46	66.5	77.5	200.0
80	11	46	80	89.5	250.0
100	12.5	47	100	111	500.0
125	15	48	119	131	750.0
150	15	49	149	161	1000.0

(# Weight in grams with box for 300 mm stem length.)

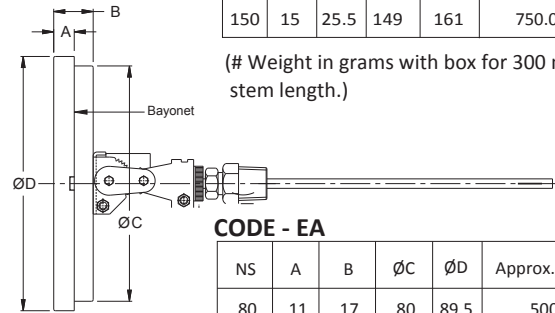
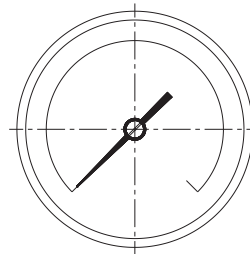
Notes : • Drawings are not to scale. • All Dimensions are in mm. • NS = Nominal Size.



CODE - CBK

NS	A	B	ØC	ØD	Approx. Wt.#
50	6.5	12	51.5	57.5	115.0
63	9.5	16	60	69.5	150.0
80	11	16	80	89.5	250.0
100	9.5	18	100	111	350.0
125	10	20	119	131.5	500.0
150	15	25.5	149	161	750.0

(# Weight in grams with box for 300 mm stem length.)



CODE - EA

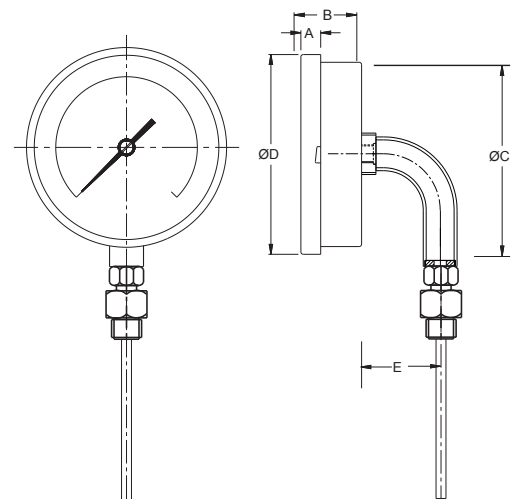
NS	A	B	ØC	ØD	Approx. Wt.#
80	11	17	80	89.5	500.0
100	12.5	19	100	111	750.0
125	15	23	119	129	900.0
150	15	23	149	161	1000.0

Range Table

Range, stem OD & stem length selection table

The following table indicates the minimum and maximum stem lengths in mm, per stem diameter per range. The lower values indicated are the minimum immersion length (below thread) for all type of threads. During stem length selection, please select between the limits mentioned below

(Range) °C	Ø 6 mm/ 6.34 mm.	Ø 8, 9.5 & 10 mm.	Ø 12 mm.
-20 to 40	115 to 500	95 to 600	95 to 600
-20 to 60	95 to 500	75 to 600	75 to 600
-20 to 120	65 to 500	55 to 600	55 to 600
-30 to 30	115 to 500	95 to 600	95 to 600
-30 to 50	95 to 500	75 to 600	75 to 600
-30 to 70	85 to 500	55 to 600	75 to 600
-40 to 40	95 to 500	75 to 600	75 to 600
-40 to 60	85 to 500	75 to 600	75 to 600
-80 to 80	65 to 500	55 to 600	55 to 600
0 to 60	115 to 500	95 to 600	95 to 600
0 to 80	95 to 500	75 to 600	75 to 600
0 to 100	65 to 500	50 to 600	75 to 600
0 to 120	50 to 500	40 to 600	55 to 600
0 to 160	45 to 500	35 to 600	55 to 600
0 to 200	40 to 500	30 to 600	45 to 600
0 to 250	45 to 500	45 to 600	45 to 600
0 to 300	65 to 500	55 to 600	55 to 600
0 to 400	55 to 500	45 to 600	45 to 600
0 to 500	55 to 500	45 to 600	45 to 600



CODE - BMEL

NS	A	B	ØC	ØD	E	Approx. Wt.#
63	12.5	16	66.5	77.5	35	150.0
80	11	17	80	89.5	35	200.0
100	12.5	19	100	111	35	250.0
125	15	21	118.5	129	35	350.0
150	15	21	149	161	35	500.0

(# Weight in grams with box for 300 mm stem length.)

Note : We offer National / International Scales like °C, °F & Dual Scale in °C & °F & Scales as per the requirement can be provided on request. Following are the example tables for ranges in °C.

Standard Ranges

Positive range single scale in °C									
0 to 60	0 to 80	0 to 100	0 to 120	0 to 160	0 to 200	0 to 250	0 to 300	0 to 400	0 to 500
Compound range single scale in °C									
-20 to 40	-20 to 60	-20 to 120	-30 to 30	-30 to 50	-30 to 70	-40 to 40	-40 to 60	-80 to 80	

Note : Other Scales are available on request.

Accessories (*Refer Datasheet For Thermowells)

* Thermowell

How To Order - Ordering Example: 2511TG : BMT.100. BM. 2BSM. FXD. 2C. 0 TO 60°C. SS

Basic Model		2511TG : BMT					
Code		50	63	80	100	125	150
Nominal Size		50 mm	63 mm	80 mm	100 mm	125 mm	150 mm
Code	Type Of Mounting	50	63	80	100	125	150
BM	Direct bottom entry	×	✓	✓	✓	✓	✓
CBK	Direct center back entry	✓	✓	✓*	✓*	✓*	✓*
EA	Every angle back entry	×	×	✓*	✓*	✓*	✓*
BMEL	Bottom entry through elbow	×	✓	✓*	✓*	✓*	✓*

*Available with external zero adjustment, Refer option EZ.

Code	Gauge Connection	50	63	80	100	125	150
8BSM	1/8" BSP(M) (Stem Dia. Max. 6.35 mm)	✓	✓	×	×	×	×
8NPM	1/8" NPT(M) * (Stem Dia. Max. 6.35 mm)	✓	✓	×	×	×	×
4BSM	1/4" BSP(M) (Stem Dia. Max. 6.35 mm)	✓	✓	×	×	×	×
4NPM	1/4" NPT(M) * (Stem Dia. Max. 6.35 mm)	✓	✓	×	×	×	×
38BSM	3/8" BSP(M) (Stem Dia. Max. 10 mm)	×	✓	✓	✓	✓	✓
2BSM	½" BSP(M) (Standard) (Stem Dia. Max. 12 mm)	×	✓	✓	✓	✓	✓
2NPM	½" NPT(M) * (Stem Dia. Max. 12 mm)	×	✓	✓	✓	✓	✓
2M20	M 20 x 1.5 (Stem Dia. Max. 12 mm)	×	✓	✓	✓	✓	✓
4YN	1 1/2" TRICLOVER ** (Stem Dia. Max. 12 mm)	×	✓	✓	✓	✓	✓

* Not recommended for Revolving/ Swivel connections. ** Without clamp, gasket & bottom. Note : Connections like Metric/ PT/ PF/ Flaired/ UNF/ G/ R etc can be provided on request.

Process Connection Type		(* Welded with stem / case & not suitable for taper threaded connections)									
ADJ	Adjustable	FXD	Fixed (Standard)*	ROV	Revolving / Swivel						
Stem Diameter											
1U	6 mm	2M	6.35 mm	2C	8 mm (Standard)	2I	9.5 mm	2J	10 mm	2K	12 mm
Stem Length (Below thread Max. 600 mm)		Please specify in mm (refer scale for minimum & maximum stem lengths)									
Range		Refer Range Table									

Code	Options	(* Applicable for NS 100 mm & above)	Code	Options
SS	AISI 316 SS case & bezel (For NS 100 mm & above)*#		TG	Toughened glass*
C5	Five point calibration certificate (for measuring range)		CN	Custom designed dial
DS	Dampening liquid silicon oil (up to 200°C)**		CD	Dial tag marking*
QZ	Dampening liquid silicon oil (up to 300°C)**		MTC	Material test certificates##
EZ	External zero adjustment* [except NS 50 mm & 63 mm (mounting Code BM)]		ST	SS tag plate
SG	Shatterproof / safety glass*			

**Gasket & Filling plug of Viton. (# Consult factory for minimum order quantity & delivery.)

Material test certificates will be provided for wetted parts only with chemical composition testing. For others, please Consult factory

Note: Design and Specifications subject to change without prior notice.