

Series 2211PG : SBT DIFFERENTIAL PRESSURE GAUGE BELLOW TYPE



Special Features

- Case & measuring system is ss
- Dry or liquid filled
- Accuracy up to %1.0 F.S.
- Standard followed in general EN 837 – 3

Application

- Chemicals
- Refinery
- Nuclear
- Aerospace
- Fertilizer
- Petrochemicals
- Paper & allied process industries
- Pharmaceutical
- Power
- Cement
- Sugar
- Food & Beverages
- Pulp

Specifications

Standard Version : 150 mm

Accuracy	: ±1.6% of F.S. for ranges up to 1 bar
	: %1.0± of F.S. for ranges 1 bar to 6 bar
Ambient temperature	: -25°C to 65+°C
Process temperature	: Max. 100°C
Static pressure	: 6 kg/cm ² up to ranges 0.6 bar
	: 25 kg/cm ² for ranges 1 bar to 2.5 bar
	: 40 kg/cm ² for ranges 4 bar to 6 bar
Over pressure limit	: %130 of Max. Scale Value
Case & Bezel	: AISI 304 SS (Bayonet Type)
Bellow	: AISI 316L SS
Process connection	: ½" NPT(M) x 2 Nos.
Movement	: AISI 304 SS
Protection	: IP 65
Dial	: Aluminum, black graduation on white background
Pointer	: Aluminum, black coloured, Micrometer Zero Adjustable
Window	: Shatterproof / Safety Glass
Gasket & Filling Plug	: Neoprene
Blow Off Disc	: Neoprene
Scale Amplitude	: 80° to 270° (Depends on Range)

Glycerine Filled Version

Accuracy	: 1.0± % of F.S.
Ambient Temperature	: Maximum 65°C
Process Temperature	: Maximum 65°C
Window	: Plexi Glass
Dampening Liquids	: Glycerin %99.7
Other Features	: Refer Specification of Standard Version

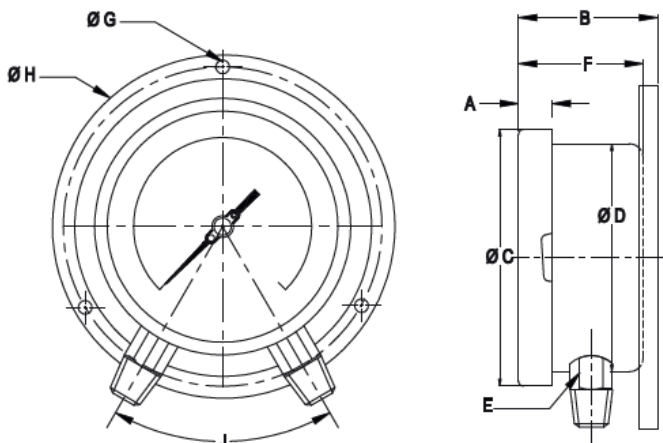
Temperature effect

The Variation of indication caused by effects of temperature is to be calculated by below formula; which is to be added in the specified accuracy while measurement :- **Formula : ± 0.08 x (t2-t1) % of F.S. where t1 = reference temperature (20+°C) and t2 = ambient temperature in °C.**

Note: Design and Specifications subject to change without prior notice.

Dimensions – Standard Version

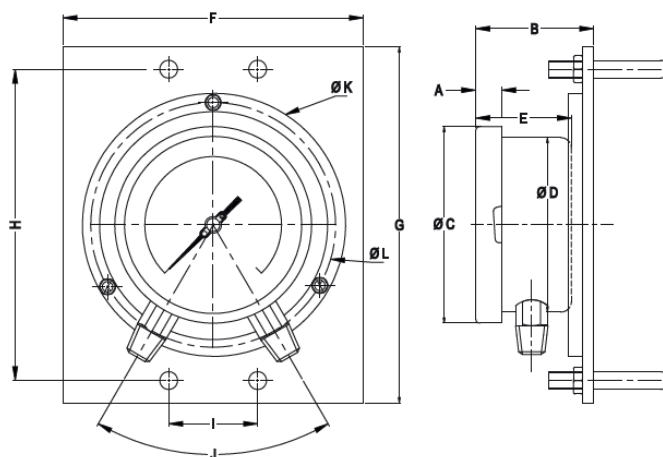
TYPE 1



NS	A	B	$\varnothing C$	$\varnothing D$	E	F	$\varnothing G$	$\varnothing H$	$\varnothing I$	J	Weight in gram (With Box)
150	15	96	161	149	22	90	6	186	168	60°	2200

2211PG:SBT model bottom entry with surface mounting

TYPE 6



NS	A	B	$\varnothing C$	$\varnothing D$	E	F	G	H	I	J	$\varnothing K$	$\varnothing L$	Weight in gram (With Box)
150	15	99	161	149	90	200	250	220	69	60°	186	168	2000

- Notes:**
- . Drawings are not to scale.
 - . All Dimensions are in mm.
 - . NS = Nominal Size

Range Table

Note: We offer Pressure, Vacuum and Compound ranges in Scales like kPa, MPa, bar, psi, kg/cm² & Dual Scale like kPa with psi, kPa with bar, bar with psi or scales as per the requirement can be provided on request. Following are the example tables for kg/cm² & psi scales

Note: Design and Specifications subject to change without prior notice.

Series 2211PG : SBT DIFFERENTIAL PRESSURE GAUGE BELLOW TYPE

Pressure Range

Single Scale

Low Pressure	High Pressure			Accessories
mmWC	kg/cm ²	kg/cm ²	kg/cm ²	Manifolds
0/4000	0/1	0/2	0/4	(Refer Individual Datasheet for complete specifications)
0/6000	0/1.6	0/2.5	0/6	

Note: Other Scale are available on customer request.

How to order – 2211PG: SBT-150-BMW-2NM-GU-DG-C5-ST

Basic Model		2211PG: SBT
Code	Nominal Size	
150	150 mm	
Code	Type of Mounting	
BMW	Wall / Surface / projection mounting with bottom entry	
BMPY	2" pipe / yoke mounting with bottom entry (mounting bracket will be provided of steel epoxy painted.)	
Code	Process Connection	
2NM	½" NPT (M) x 2 Nos. (Standard)	

Note: Connections like Metric/PT/PF/Flaired/UNF/G/R etc can be provided on request. Consult factory for price & delivery.

Code	Bellow
GU	AISI 316L SS (Standard)

Range

Refer Range Table

Code	Options	Code	Options
SS	AISI 316 SS Case & Bezel	C5	Five point calibration certificate
DG	Dampening liquid glycerin	CT	Calibration certificate traceable to National / International standards
DS	Dampening liquid silicon oil**		
CD	Custom designed dial	MTC	Material test certificate #
PP	Maximum reading pointer with plexi glass (for dry version)*	JU	2" pipe/yoke mounting bracket & 'U' clamp (AISI 304 SS)
CN	Conformity as per NACE standard	FN	2" pipe/yoke mounting bracket & 'U' clamp (AISI 316 SS)
TG	Toughened glass	ST	SS tag plate

*For ranges 2.5 kg/cm² and above. **BOD Gasket & Plug Viton. Suitable for ranges 1 bar to 6 bar

Material Test Certificate will be provided for wetted parts only with chemical composition testing. For others, please consult factory.

Note: For selection of Diaphragm Seals, refer individual data sheets.

(The Capillary length shall be maximum up to 3 meters & range shall be above 1 kg/cm².)

For other optional items, please contact factory for delivery and minimum quantity of order.

Note: Specifications and dimensions given in this product catalogue represents the state of engineering at the time of printing. Modifications may take place and materials specified may be replaced by others without prior notice.